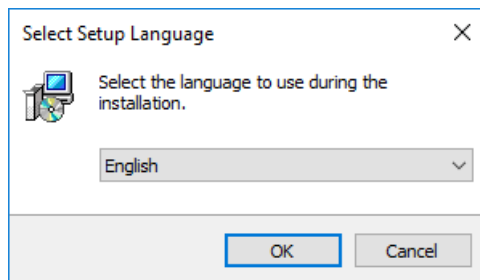


Installation of R

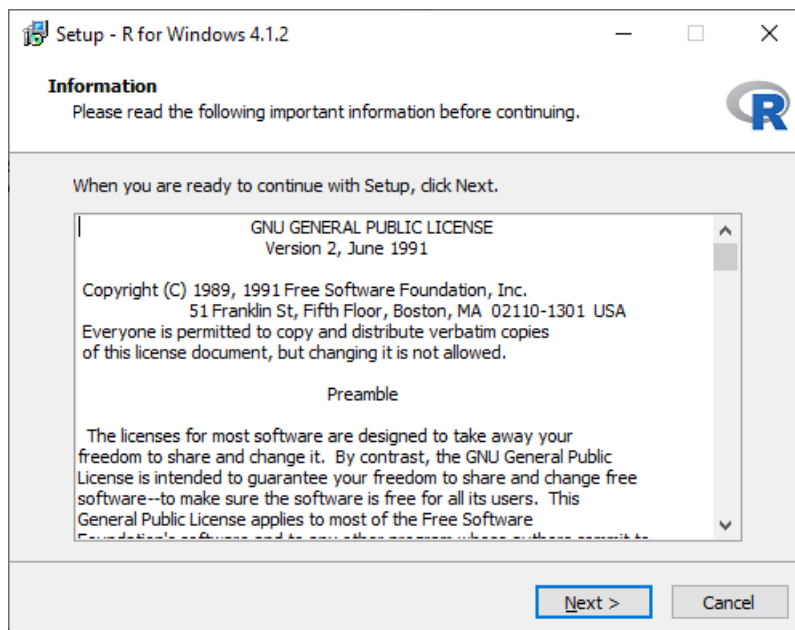
1. Install R (only default settings)

Installation program of R can be downloaded from <https://www.r-project.org>. Run the program "R-4.x.x-win.exe" and follow the steps given below (default settings). For analyzing SWAP-results, R version 4.2.x or later is required¹.

Step 1 Select setup Language: **English**



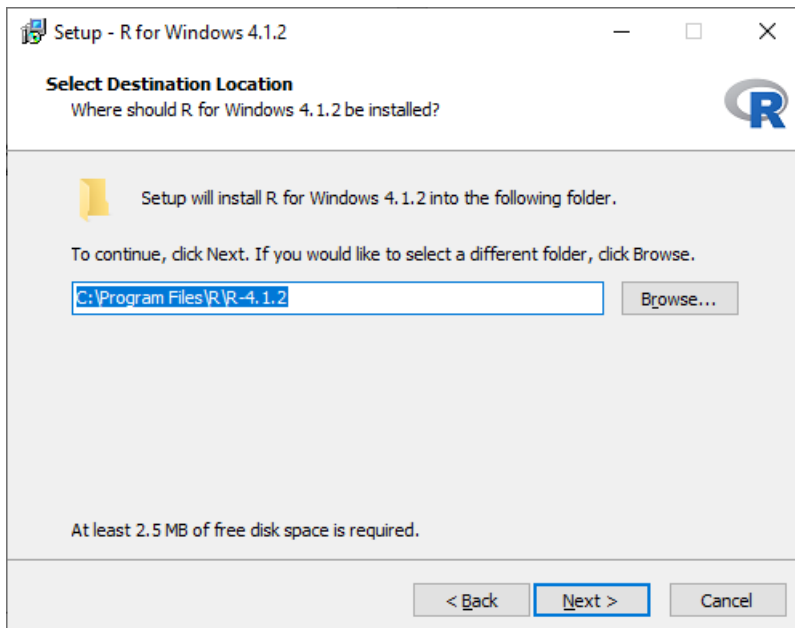
Step 2 Information: **Next**



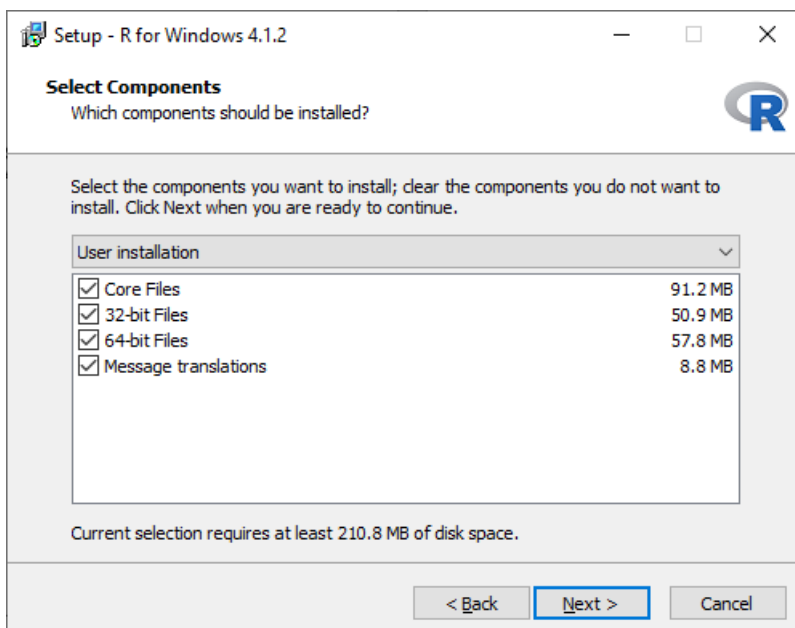
¹ The sceendumps in this document shows an old version of R.

Step 3: Select Destination Location: **Next**

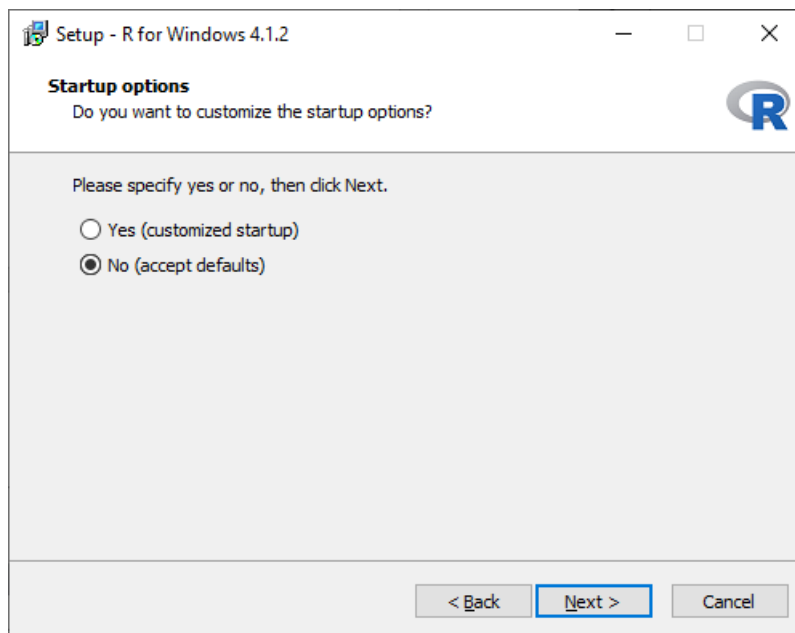
Note: Select a other location in case you don't have writing permissions on the C-drive



Step 4 Select Components: **Next**

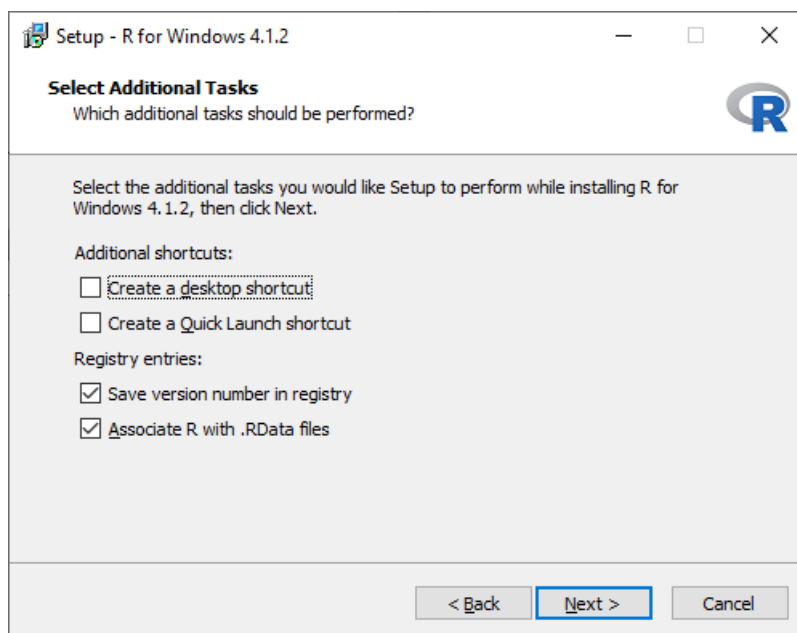


Step 5 Startup options: **Next**

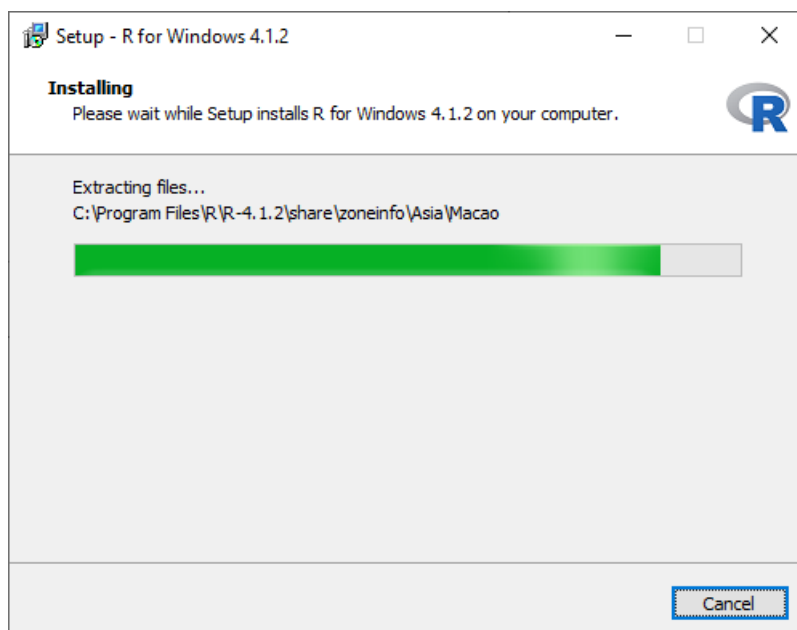


Step 6 Select Start Menu Folder: **Next**

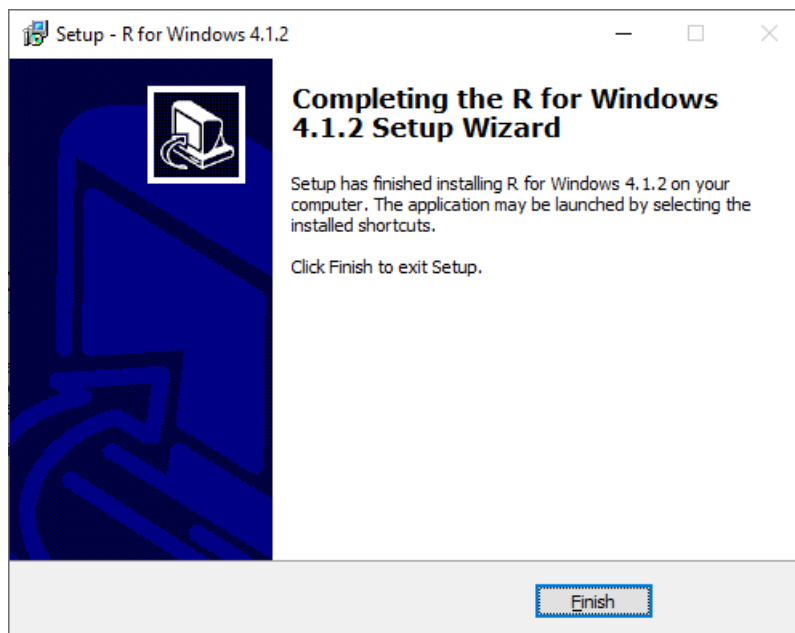
Step 6 Select Additional Task: **Next**



Step 7 Select Additional Task: **Next**

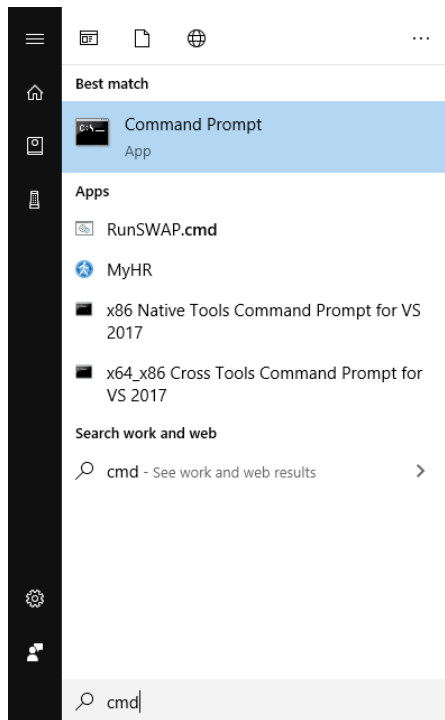


Step 8 Select Additional Task: **Finish**

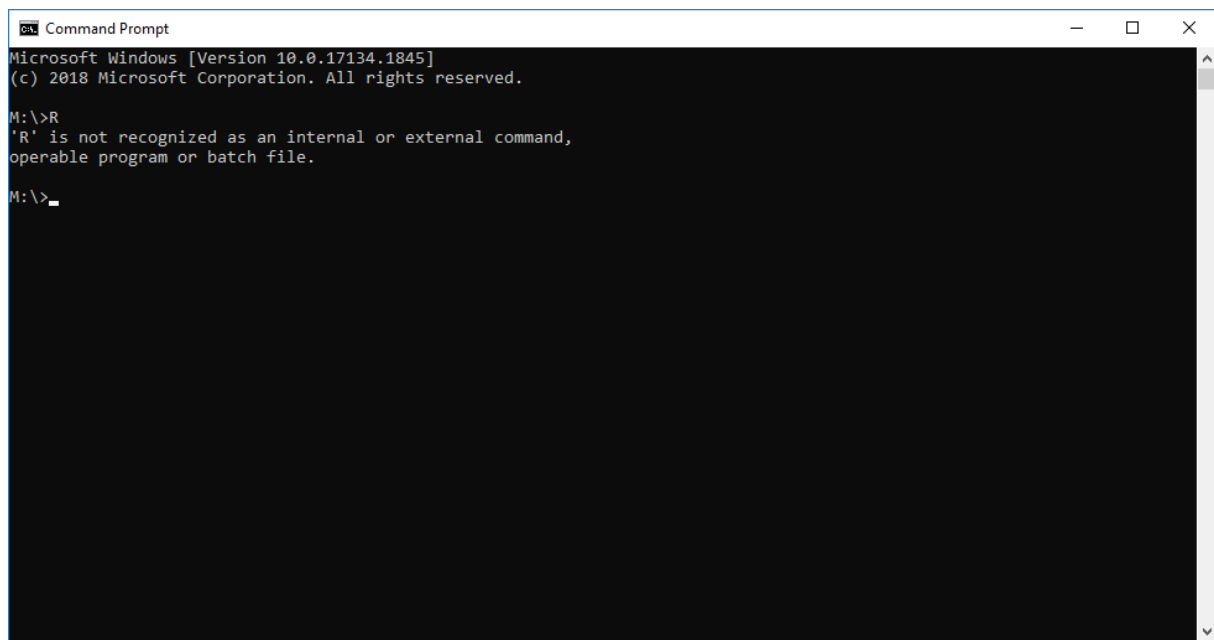


2. Communication with WINDOWS

Check if WINDOWS is recognizing the installation of R by opening a Command Prompt:



And give the command 'R':

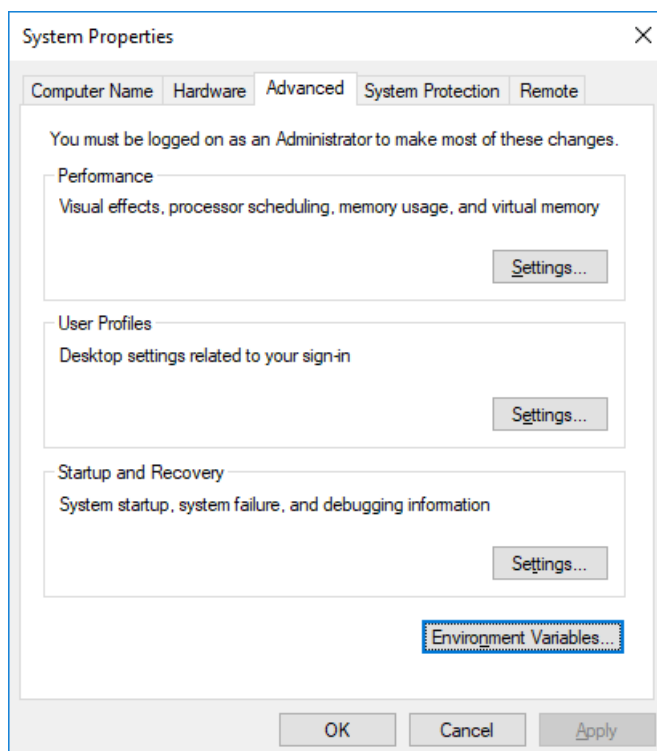


```
Command Prompt
Microsoft Windows [Version 10.0.17134.1845]
(c) 2018 Microsoft Corporation. All rights reserved.

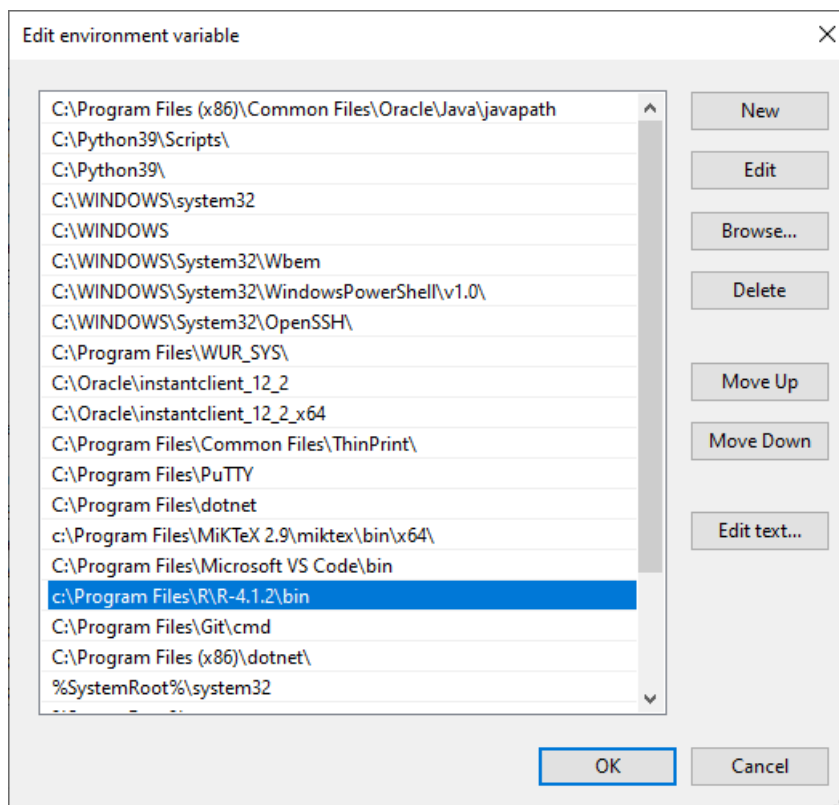
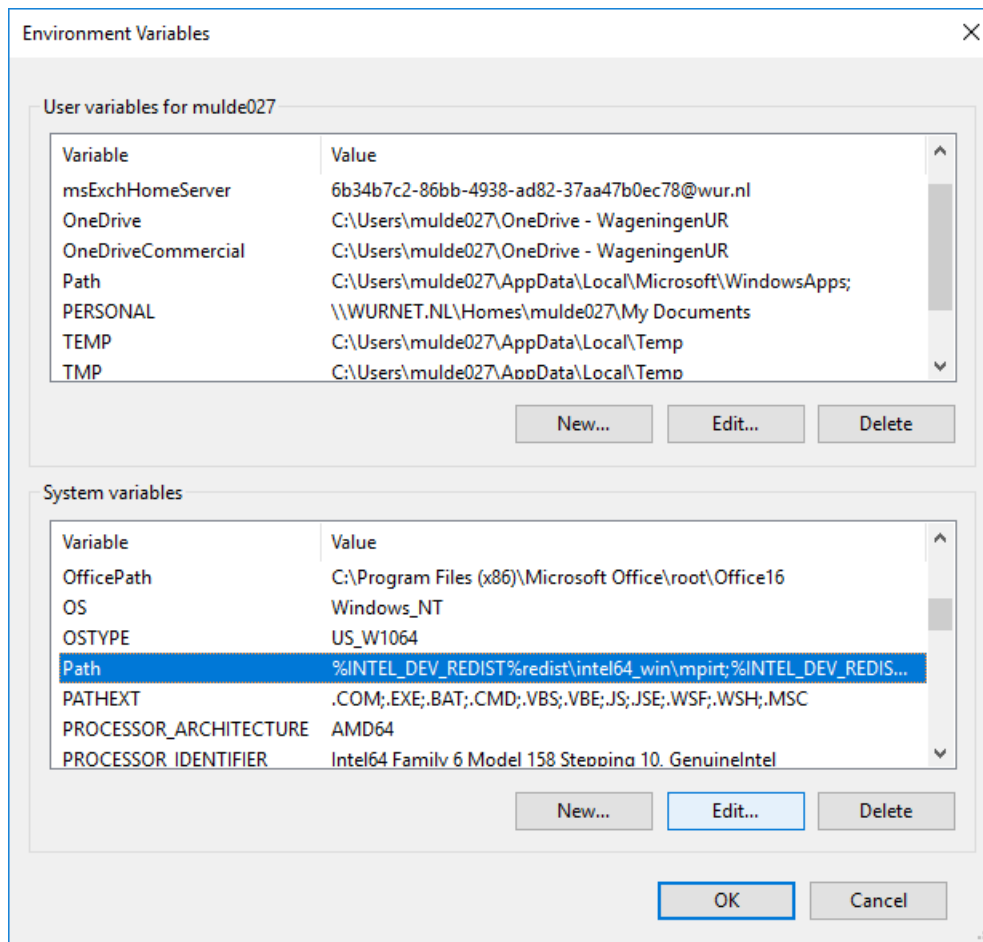
M:\>R
'R' is not recognized as an internal or external command,
operable program or batch file.

M:\>_
```

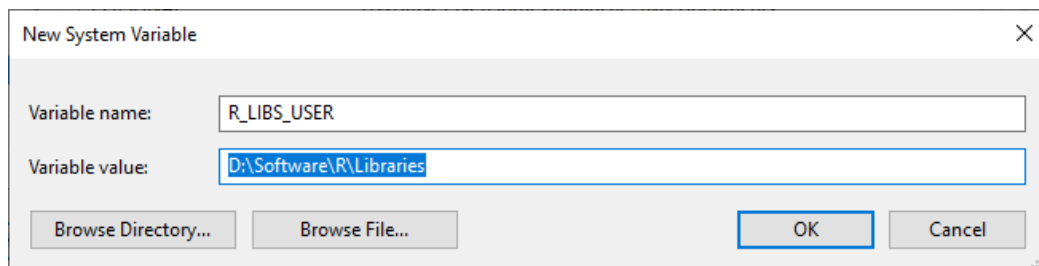
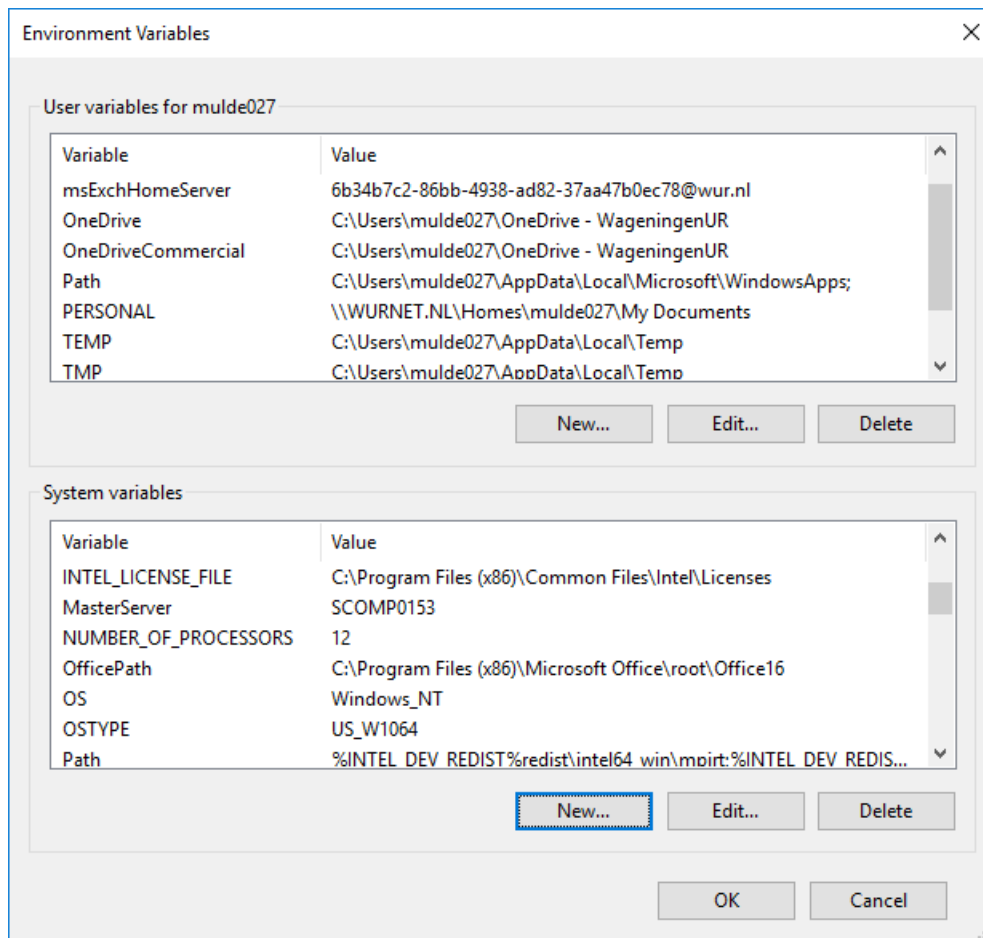
In case WINDOWS does not recognize the 'R' command (like in the example above), you'll have to add an extra Environment Variable. Go to System Properties (Control Panel -> System and Security -> System -> Advanced system settings) and select Environment Variables:



Edit *Path* at System Variable by adding the folder with the R installation:

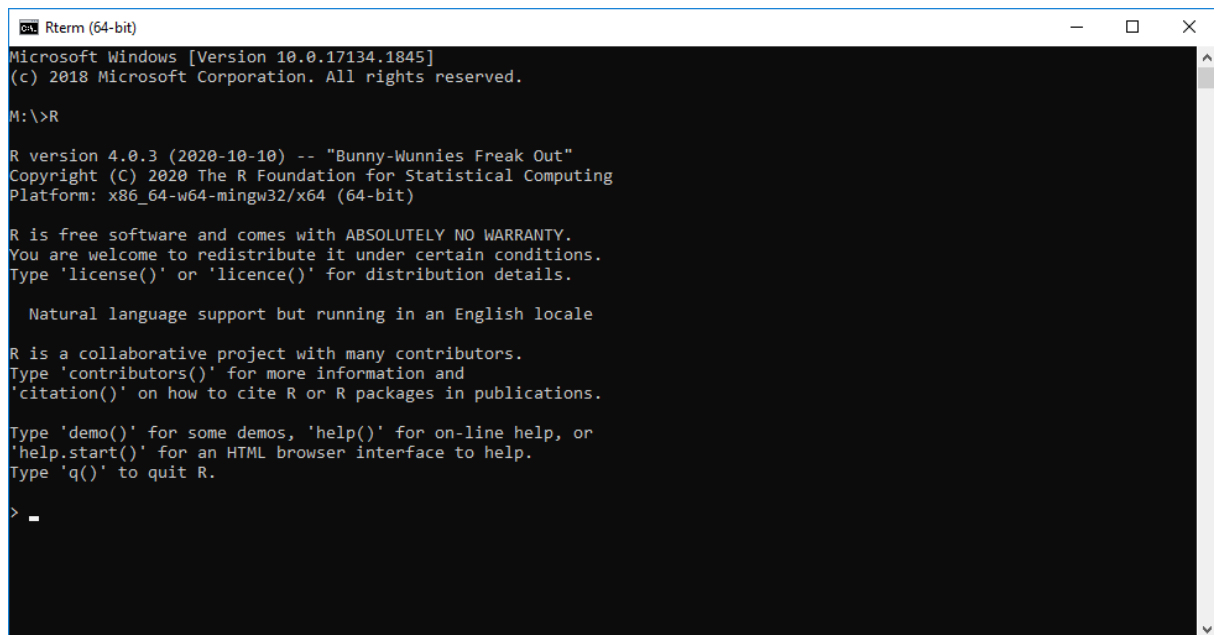


Also add a new variable 'R_LIBS_USER' at System Variable. You can use 'Browse Directory' and select the a folder in which R-libraries will be installed²:



² Make sure this is an existing folder with writing permissions.

Check if WINDOWS is recognizing the installation of R again by opening a Command Prompt and give the command 'R':



```
Rterm (64-bit)
Microsoft Windows [Version 10.0.17134.1845]
(c) 2018 Microsoft Corporation. All rights reserved.

M:\>R

R version 4.0.3 (2020-10-10) -- "Bunny-Wunnies Freak Out"
Copyright (C) 2020 The R Foundation for Statistical Computing
Platform: x86_64-w64-mingw32/x64 (64-bit)

R is free software and comes with ABSOLUTELY NO WARRANTY.
You are welcome to redistribute it under certain conditions.
Type 'license()' or 'licence()' for distribution details.

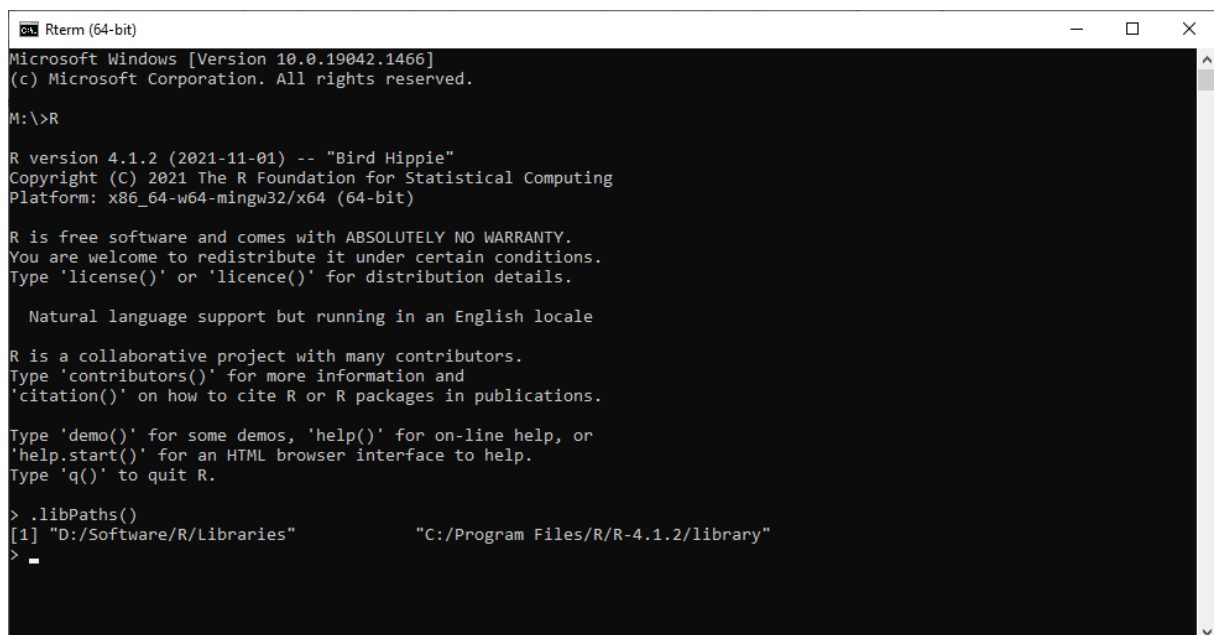
  Natural language support but running in an English locale

R is a collaborative project with many contributors.
Type 'contributors()' for more information and
'citation()' on how to cite R or R packages in publications.

Type 'demo()' for some demos, 'help()' for on-line help, or
'help.start()' for an HTML browser interface to help.
Type 'q()' to quit R.

> _
```

In case of successful installation, the R program will start with the message in the example above. To check if the default folder for installation of R-packages is set successfully, give the command `.libPaths()`, this should be the same as the system variable `R_LIBS_USER`.



```
Rterm (64-bit)
Microsoft Windows [Version 10.0.19042.1466]
(c) Microsoft Corporation. All rights reserved.

M:\>R

R version 4.1.2 (2021-11-01) -- "Bird Hippie"
Copyright (C) 2021 The R Foundation for Statistical Computing
Platform: x86_64-w64-mingw32/x64 (64-bit)

R is free software and comes with ABSOLUTELY NO WARRANTY.
You are welcome to redistribute it under certain conditions.
Type 'license()' or 'licence()' for distribution details.

  Natural language support but running in an English locale

R is a collaborative project with many contributors.
Type 'contributors()' for more information and
'citation()' on how to cite R or R packages in publications.

Type 'demo()' for some demos, 'help()' for on-line help, or
'help.start()' for an HTML browser interface to help.
Type 'q()' to quit R.

> .libPaths()
[1] "D:/Software/R/Libraries"          "C:/Program Files/R/R-4.1.2/library"
> _
```

Close the R-program by the command `'q()'` and close the Command Prompt.

3. Installing R-libraries

Once R is installed, it is time to install R-libraries. For this purpose an R-script is created called 'libraries.R' which is called by command file "install_libraries.cmd". The script can be opened in any text-editor. In the initial part of the procedure settings are user-specific.

```
# libraries.R
# Wageningen Environmental Research
#
#
# initial part of procedure
#-----

# general R-settings
repos_CRAN <- "https://cloud.r-project.org/" # default CRAN-repository
repos_LOCAL <- "file:./Local"               # path to LOCAL-repository

# install settings
dir_pkg <- NULL                             # in case of default R settings use 'NULL'
online <- TRUE                               # try to load the packages in case there is no connection to the internet
update <- FALSE                             # check for package updates

# set packages to load
pkg_load <- c("stringr", "fs", "progress", "tibble", "dplyr", "readr", "ggplot2", "grid", "controlR", "KNMItools", "SWAPtools")

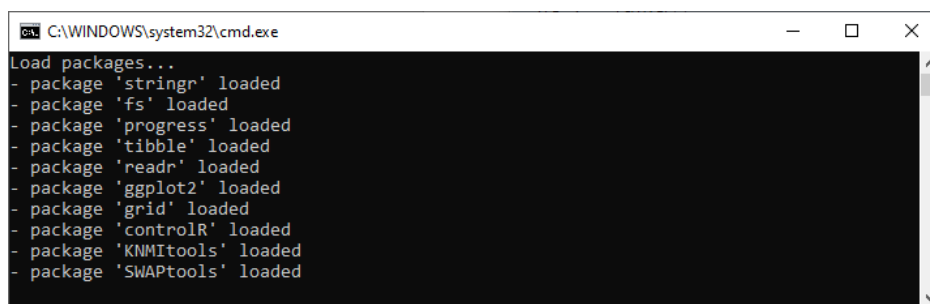
# main part of procedure
#-----
```

For installing default R-libraries a link to the 'CRAN_mirror' and 'repos_CRAN' should be specified (see default settings above). For installing tailor-made packages a link to a local repository can be specified with 'repos_LOCAL' (use 'NULL' if not present).

The location where R-libraries should be installed on your computer is set by 'dir_pkg'. In case 'R_LIBS_USER' is added as a System Variable (see Chapter 2) use 'NULL', otherwise specify a path to the location where you want to install R-libraries. A list of libraries to install is given by 'pkg_load'.

Before executing the command file 'install_libraries.cmd' by double clicking, first open the file 'set_Rversion.cmd' in a text-editor and check for the path to the R installation. In case a command file is not starting in the folder where it is executed you will need to set the default work-directory each time you start an R-procedure. You can provide the "set_Rversion.cmd" with the default work-directory. After this check above, you can start with the installation of the R-libraries. This can take a few minutes.

To check if all libraries are installed, rerun this procedure ('install_libraries.cmd'). In the MSDOS box only messages of loading packages should appear.



```
C:\WINDOWS\system32\cmd.exe
Load packages...
- package 'stringr' loaded
- package 'fs' loaded
- package 'progress' loaded
- package 'tibble' loaded
- package 'readr' loaded
- package 'ggplot2' loaded
- package 'grid' loaded
- package 'controlR' loaded
- package 'KNMItools' loaded
- package 'SWAPtools' loaded
```

In case a local repository is used in combination with a relative path like in the example above, make sure to set 'online' to 'FALSE' and save the file 'libraries.R'.